



# The Hundred of Hoo Nursery Prospectus



# The Hundred of Hoo Nursery are part of Leigh Academies Trust



Leigh Academies Trust is one of the country's largest and most-established multi-academy trusts operating across Kent, Medway and South East London. It contains primary, secondary and special academies and is highly inclusive and successful. Our mission is to deliver "education for a better world" by ensuring that young people in our academies have an excellent start in life regardless of their background or ability.



## Our Values

### We care -

about our pupils through our human scale approach to education, our staff and their well-being and the communities that we serve, driven by our high ideals and strong moral values.

### We have boundless ambition -

to achieve excellence for all and create confident young adults with high levels of resilience and integrity.

### We work together -

as one team in the belief that we are greater than the sum of our parts. We foster an enterprising culture through collaboration and in close partnership with industry and other educators.

### We keep getting better -

using our 'can-do' attitude towards continuous improvement and innovation.

For admission enquiries telephone: 01634 252334  
Or email: [nursery@hundredofhooacademy.org.uk](mailto:nursery@hundredofhooacademy.org.uk)

# Contents

Use our contents page to navigate your way through our prospectus

03 Welcome

04 The Nursery Day

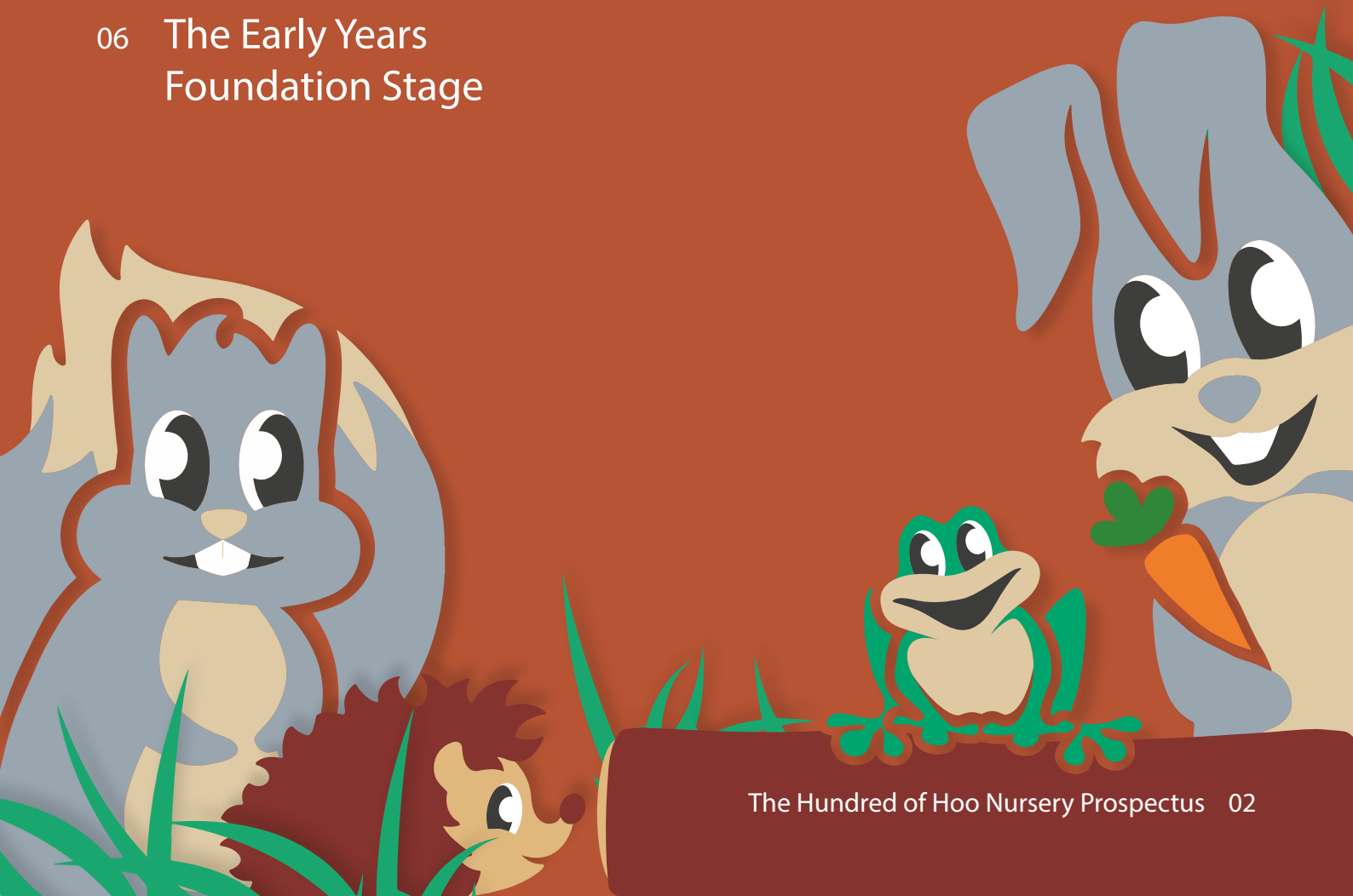
05 Welcome to Our  
Classes

06 The Early Years  
Foundation Stage

07 Snacks and Meals

07 Our Location

07 Contact Us



# Welcome

## Welcome to The Hundred of Hoo Nursery

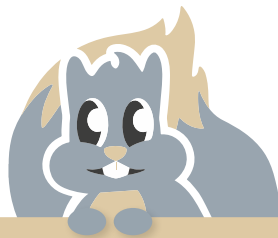


The Hundred of Hoo Nursery was established in September 1990 as a full time day nursery operating for 49 weeks of the year with opening hours of 8:00am - 5.30pm. We are situated on the site of The Hundred of Hoo Academy Secondary School. As a setting we are registered with Ofsted for a total number of 96 children aged from birth to 11 years old as follows:



### **Bunnies**

Cares for up to 12 babies aged 0 - 2 years old.



### **Squirrels**

Cares for up to 20 children aged 2 - 3 years old.



### **Badgers and Foxes**

Cares for up to 54 children aged 3 - 4 years old in our 2 preschool rooms.

### **After School Club**

Cares for up to 22 children aged 4 1/2 - 11 years old.

## Our Ethos

We are a well established nursery that provides a one-of-a-kind, exciting and stimulating learning environment that will give children the confidence and skills to enable them to move smoothly through their learning journeys.

We aim to provide a friendly welcoming environment where all children flourish and thrive and are supported to become independent, confident and curious learners. We recognise that parents are a child's first educator and encourage the sharing of achievements, experiences and special moments. We build relationships with both our parents and children and hope that both will be able to look back on their experiences of travelling through the nursery with fond memories.

We want our children to be children, to be happy and want to attend our nursery. Through the provision of a well delivered curriculum we ensure that children learn new skills and knowledge that they will need to make the most of starting the next phase in their education. We believe that children learn best when they are thoroughly engaged in high quality, exciting opportunities and activities. We understand that outdoor play brings a different element to children's play, we offer excellent opportunities for children to gain incredible physical skills. We encourage children to take risks, climb, balance, run, be messy and explore the environment around them alongside knowledgeable supportive Early Years Educators.

Hayley Clark,  
Nursery Manager



Full day  
**8:00am - 5:30pm**

Morning Session  
**8:00am - 1:00pm**

Afternoon Session  
**1:00pm - 5:30pm**

## The Nursery Day

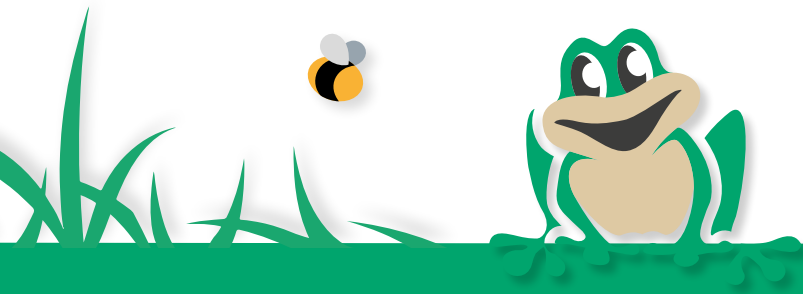
The nursery offers free funding spaces for 3 and 4 year olds for both 15 and 30 hours depending on parents eligibility. We also take children who are eligible for 2 year old funding. The funding is offered for 38 weeks per year in line with the academy term dates.



# Welcome to Our Classes

## Bunnies

Bunnies room is where the excitement begins! Our babies learn in an environment which is fully equipped with babies in mind and is constantly evolving and being developed around the baby's interests. We pride ourselves on being an exciting and engaging place to be and one that is responsive to all needs and interests. We encourage our babies to be independent learners through a range of activities and choices given to them. We follow a curriculum which allows us to be creative with our learning and which lets the babies lead their own learning and development.



## Squirrels

There will be lots of new things for children to learn and explore when they join Squirrels room. We aim to provide a happy, stimulating environment where every child will be given the best possible opportunities to achieve their full potential and an education which will nurture their needs as individuals. In Squirrels room children can explore the next stages in their development whilst having lots of fun. We pride ourselves on offering a wide range of activities to encourage children to be independent, confident and engaged learners

## Badgers and Foxes

Beginning the next phase in their educational journey children in Badgers and Foxes are starting the early processes in preparation for commencing in primary school. The children will learn lots of new and exciting skills and knowledge and every individual child will be supported to achieve their full potential and receive an education which will nurture their needs as an individual.

As our Foundation Stage children enter the classroom they learn primarily through a variety of play and real-life experiences and are able to access the whole environment freely.

# The Early Years Foundation Stage

## Overarching Principles

All children within the nursery are supported by our Early Years Educators who follow the Early Years Foundation Stage Curriculum, which has the following embedded:

### The Unique Child

We understand that children are all individual and have their own likes and interests, through our 'In the moment' planning we are able to flow with children's ideas and suggestions which leads to high levels of engagement and outcomes through challenging and exciting activities.

### Positive Relationships

Our well established Key worker system enables children to explore their surroundings from a safe base. We understand that social interaction and close relationships are key to a child becoming strong and independent learners.

### Enabling Environments

Our environment adapts and changes constantly to support the needs and interests of our different children attending. We provide an exciting, safe, secure and stimulating base for all children to explore from both indoors and outdoors.

### Learning and Development

We recognise that all children develop and learn in different ways. Our planning and teaching allows us to have a flexible approach when delivering activities and opportunities for learning.

## What we want our children to be:





# Snacks and Meals

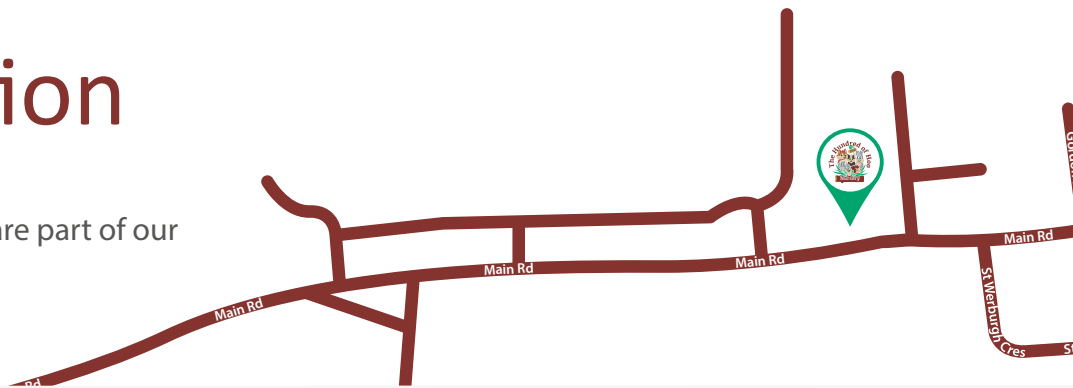
If your child is staying for lunch they will be provided with a healthy well balanced two course hot lunch provided by the main academy kitchen.

A morning snack is provided by the nursery which includes a piece of fruit and milk or water.  
An afternoon snack is provided by the nursery which is a mix of sandwiches, wraps etc.



## Our Location

The Hundred of Hoo Nursery are part of our Medway & Ebbsfleet Cluster.



## Contact Us

For further information please email:  
[nursery@hundredofhooacademy.org.uk](mailto:nursery@hundredofhooacademy.org.uk)  
or call 01634 252334.

You can also visit our website at:  
[hundredofhoonursery.org.uk](http://hundredofhoonursery.org.uk)







Main Road,  
Hoo St Werburgh  
Rochester  
Kent ME3 9HH

01634 252334  
[nursery@hundredofhooacademy.org.uk](mailto:nursery@hundredofhooacademy.org.uk)  
[hundredofhoonursery.org.uk](http://hundredofhoonursery.org.uk)



Shaping Lives, Transforming Communities

Chief Executive: Simon Beamish  
BA (Hons) MSc PGCE NPQH NLE FCCT

Carnation Road, Strood, Rochester, Kent ME2 2SX  
01634 412200 | fax: 01634 412201  
[info@latrust.org.uk](mailto:info@latrust.org.uk) | [leighacademiestrust.org.uk](http://leighacademiestrust.org.uk)

Leigh Academies Trust is a registered company  
(company no 2336587) and an exempt charity.

